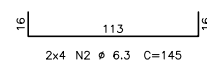
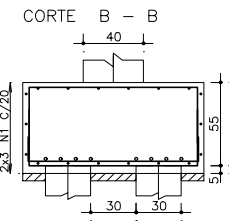
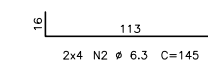
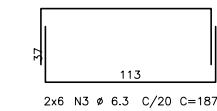
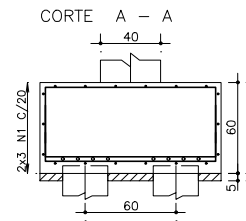
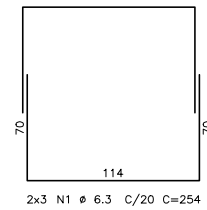
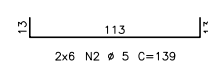
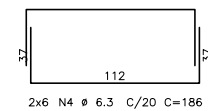
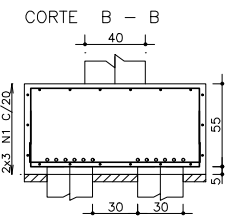
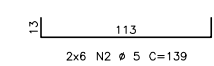
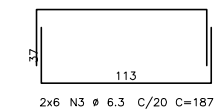
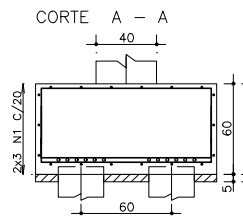
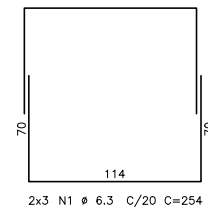
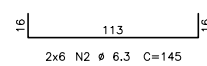
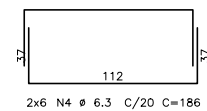
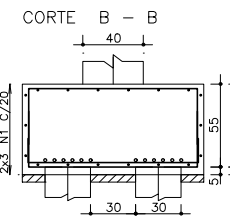
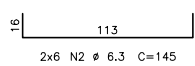
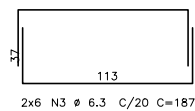
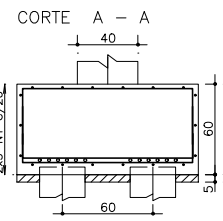
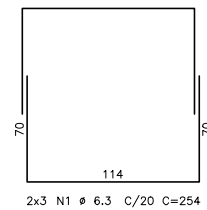



	AÇO	POS	BIT (mm)	QUANT	COMPRIMENTO	
					UNIT (cm)	TOTAL (cm)
B17	50A	1	6,3	6	254	1524
	50A	2	6,3	16	145	2320
	50A	3	6,3	12	187	2244
	50A	4	6,3	12	186	2232
B19	50A	1	6,3	6	254	1524
	50A	2	10	12	165	1980
	50A	3	6,3	16	187	2992
	50A	4	6,3	16	186	2976
B22	50A	1	6,3	6	254	1524
	60B	2	5	24	139	3336
	50A	3	6,3	12	187	2244
	50A	4	6,3	12	186	2232
B23	50A	1	6,3	6	254	1524
	50A	2	6,3	12	145	3480
	50A	3	6,3	12	187	2244
	50A	4	6,3	12	186	2232
B38	50A	1	6,3	8	254	2032
	50A	2	8	16	193	3088
	50A	3	12,5	12	177	2124
	50A	4	8	16	194	3104

RESUMO AÇO CA 50-60			
AÇO	BIT (mm)	COMPR (m)	PESO (kg)
60B	5	33	5
50A	6,3	333	82
50A	8	62	24
50A	10	20	12
50A	12,5	21	20
Peso Total	60B =		5 kg
Peso Total	50A =		139 kg



fck 250. cm2 – C25		Schuring & Schuring Ltda.	
 Schuring & Schuring		Escritorio Técnico B.E.SCHURING – Projetos de Engenharia Av. XV de Novembro, 489 – Porto 20. Andar – Curitiba MT Fone:(065) 321 9959 – Fax:(065) 623 5066 – Email – schuring@terra.com.br	
PROJETO:	PROPRIETARIO:		
PROJETO ESTRUTURAL	PREFEITURA MUNICIPAL VARZEA GRANDE		
	PROJETO ORLA DO PORTO ALAMEDA JULIO MULLER		
	RESP. TEC. EXECUCAO:	OBRA:	
		CENTRO CULTURAL	
	END:	Alameda Julio Muller, s/n Bairro Alameda / Varzea Grande – MT	
AUTORES DO PROJETO:	ASSUNTO:	FUNDAÇÃO DET ARM BLOCOS	
Benedito Eliseu Schuring Eng.Civil – CREA 715/D–MT	PECAS DETALHADAS	B17 / B19 / B22 / B23 / B38	
Andre Luiz Schuring Eng.Civil – CREA 8697/D–MT	FCK: 250 ESQUELA: 1:50 DATA: 13/08/2018	DIREITOS AUTOMATOS RESERVADOS VERIFICAR MEDIDAS NA OBRA ARQUIVO:	FOLHA No. 06